



# INDOFINE Chemical Company, Inc.

121 Stryker Lane, Bldg. 30, Suite 1 • Hillsborough, NJ 08844 • U.S.A.

Phone: (908) 359-6778 • FAX: (908) 359-1179

website: [www.indofinechemical.com](http://www.indofinechemical.com)

e-mail: [chemical@indofinechemical.com](mailto:chemical@indofinechemical.com)

## CERTIFICATE OF ANALYSIS

Catalog Number: 06-1275

Product Name: TODDALOLACTONE

CAS Number: [483-90-9]

Lot Number: 2402908

Chemical Formula: C<sub>16</sub>H<sub>20</sub>O<sub>6</sub>

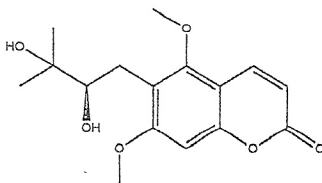
Molecular Weight: 308.33

Appearance: Off-white cotton-like solid

Water Content: 0.6%

Storage: Store in a cool, dry place. Protect from light.

Purity(HPLC): 99.9%



Prepared by:  
Ramesh Mandadi  
Ramesh Mandadi  
Director of Operations

Reviewed and Approved by:  
Sujata Moton  
Sujata Moton  
VP



# INDOFINE Chemical Company, Inc.

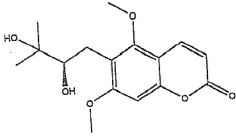
121 Stryker Lane, Bldg. 30, Suite 1 • Hillsborough, NJ 08844 • U.S.A.

Phone: (908) 359-6778 • FAX: (908) 359-1179

website: [www.indofinechemical.com](http://www.indofinechemical.com)

e-mail: [chemical@indofinechemical.com](mailto:chemical@indofinechemical.com)

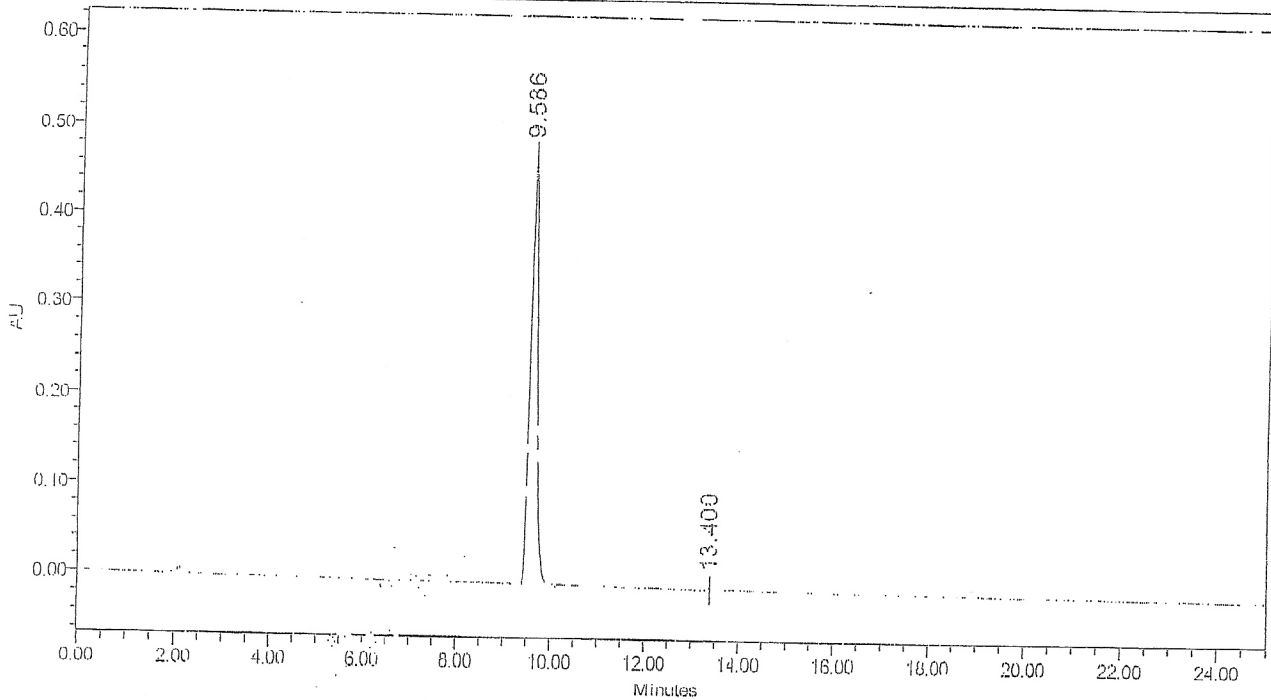
## HPLC ANALYSIS



Catalog No.: 06-1275  
Product Name: Toddalolactone  
Lot No.: 2402908

### SAMPLE INFORMATION

Sample Name:	Toddalolactone	Acquired By:	
Sample Type:	Unknown	Sample Set Name:	
Vial:	19, 31	Acq. Method Set:	Toddalolactone
Injection #:	1	Processing Method:	sample
Injection Volume:	10.00 ul	Channel Name:	PDA Ch1 330nm@4.8nm
Run Time:	30.0, 25.0 Minutes	Proc. Chnl. Descr.:	PDA Ch1 330nm@4.8nm



### Peak Results

	RT	Area	% Area	Height (µV)	USP Plate Count	USP Resolution
1	9.586	5041209	99.96	480336	19332.36	
2	13.400	1957	0.04	187	25089.01	14.05